



# ACCELERATOR PROGRAM

KICKSTART YOUR CAREER WITH AN APPRENTICESHIP  
OR TRAINEESHIP WITH THE AEH GROUP.

# WHY CHOOSE THE AGRICULTURAL INDUSTRY?



Agriculture is a major contributor to the Australian national economy. Its 126,000 full-time farmers annually produce \$137 billion worth of product, which is 12 per cent of Australia's gross domestic product.

***Agriculture is an essential service in our economy and provides career longevity.***

Australian agriculture exports approximately \$30 billion worth of product annually and provides 93 per cent of the nation's domestic food supply. Agriculture and its related industries support 1.6 million Australian jobs. Efficiency gains through new technologies and farm management practices have enabled Australian agriculture to stay a step ahead of international competitors. This is, in large part, driven by research and development, on which we spend about \$500 million annually.

Agricultural Equipment Holdings (AEH) are securing our place in the industry by expanding our network which will increase employment opportunities for growth and long-term career progression within the group.

*Annual productivity growth in agriculture has been 2.8 per cent over the past 30 years – far greater than any other Australian industry sector*



# WHO ARE WE?

---

Agricultural Equipment Holdings comprises of dealerships across Australia. Our dealer network is continually expanding providing more and more opportunities to our employees and customers.

We offer solutions in agricultural and construction plant and equipment, coupled with extensive parts and service to our valued customers. Together we are “joining forces” to provide better agricultural machinery solutions – combining tradition, innovation and technology. Each of our centres specialises in Agricultural & Construction Equipment Sales, Finance, Service & Parts.



**WE STAND BY OUR COMPANY VALUES OF**

**TEAMWORK  
COMMITMENT  
FAMILY  
LEADERSHIP  
EXCELLENCE**



# WHY CHOOSE US?

We take pride in the knowledge that high quality staff are our major advantage. As a group of leading agricultural dealerships, we have a longstanding policy of attracting and developing only the best. We provide a structured and comprehensive apprenticeship program and our apprentices and trainees are given the best training and mentor-ship available to become effective and capable team players.

The accelerator program is built on the philosophy of structured learning, providing support, direction, guidance and mentorship to each apprentice.  
With apprenticeship opportunities available across Australia we are seeking expressions of interest in the following areas:



**ADMINISTRATION**



**PARTS INTERPRETER**



**PLM SPECIALIST**



**TECHNICIAN**

**SALES**



**AUTO ELECTRICIAN**





# UNLEASH YOUR POTENTIAL....

Are you ready to join the AEH group?

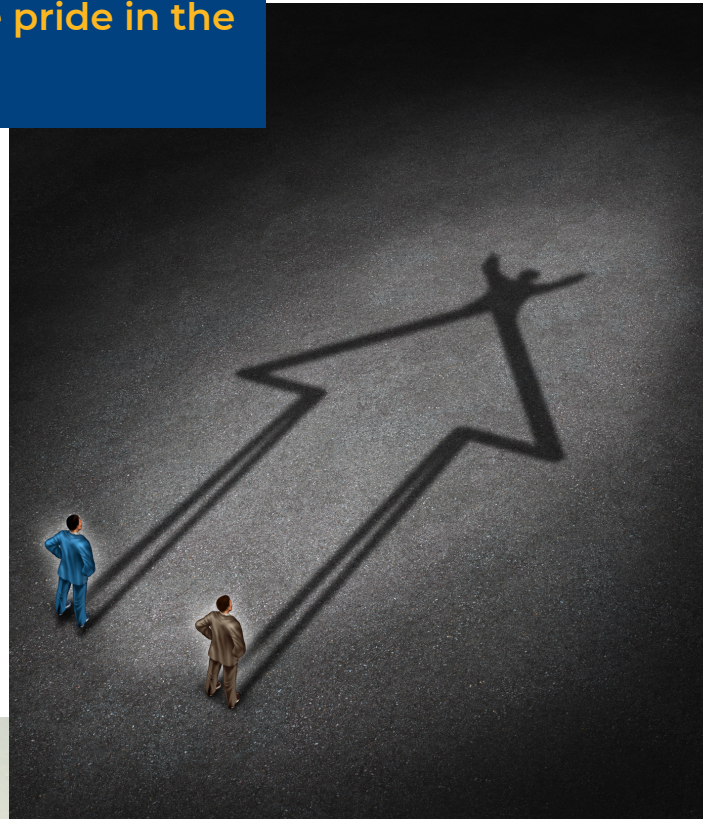
Our friendly and high performing teams are committed to success.

**We are looking for apprentices/ trainees who.....**

- want to add value in everything you do
- are driven by a 'can do' attitude
- strive for excellence
- display strong communication skills
- value the importance of customer service
- work well within a team and take pride in the teams results and their own

You will undergo on the job and off the job training, with a formal nationally recognised training component.

Additional training will be provided through New Holland for certain roles to gain product knowledge to best serve our customers. You will also have the opportunity to attend any networking events in your chosen field.



**BELIEVING IN YOURSELF  
IS THE FIRST SECRET TO  
-SUCCESS-**

# RECRUITMENT PROCESS

1. Provide a letter outlining why you want to undertake an apprenticeship/traineeship with AEH. Tell us about yourself, work experience, your personal achievements, and interests.
2. Undergo online behavioural and aptitude testing.
3. Attend an interview to discuss the opportunity you are interested in.
4. Offers will be made to successful applicants.

## PARTS INTERPRETER

Liaise with customers to assess their needs, then recommend and sell the appropriate parts.

Provide advice regarding parts specifications to customers.

Source and order parts.

Assist workshop team by providing parts required for jobs.

## ADMINISTRATION ASSISTANT

Provide general and specialist administrative support to all departments within the dealership.

Process customer accounts, provide reports to finance department.

Utilise industry based technology to enhance internal processes

## HEAVY VEHICLE TECHNICIAN

Service, repair and pre-delivery of agricultural and heavy vehicle machinery to a high standard for our customers.

Attend to onsite repairs, maintenance, and breakdowns.

## PLM SPECIALIST

Provide specialist advice and support regarding precision farming and guidance products; as well as repairs and maintenance.

Sales, start up, running and use of all machines and PLM/guidance products.

## AUTO ELECTRICIAN

Install, maintain, identify faults and repair electrical wiring and computer-based equipment in various types of plant and machinery.

Attend to onsite repairs, maintenance, and breakdowns.

## SALES

Sell new and used machinery using detailed knowledge of all products on offer to customers.

Plan and carry out demo and information days.

Attend field days and local shows.

Work experience is available to a limited number of secondary school students with an interest in building a career in agriculture.



# CONTACT US

---



**[careers@aehgroup.net.au](mailto:careers@aehgroup.net.au)**

Email your resume & cover letter detailing the position & location you are interested in.




**[www.aehgroup.net.au](http://www.aehgroup.net.au)**

Check out our website for current positions available.



**0432 684 514**

Have some questions? Give us a call.

A black and white photograph of a large tractor, possibly a combine harvester, inside a workshop. A person is standing next to the tractor, looking at its engine compartment. The tractor has 'GOODYEAR' and 'OPTITRAC D180' written on its large tire.

*We aim to recruit  
quality people  
through a fair and  
open process.*



## OUR LOCATIONS

### AEH CENTRAL NSW

Cowra Machinery Centre  
53 Young Rd, Cowra NSW 2794

Forbes Machinery Centre  
2 Parkes Rd, Forbes NSW 2871

McPhersons Parts & Service - Parkes  
100/106 Forbes Rd, Parkes NSW 2870

South West Tractors - Young  
176 Milvale Rd, Young NSW 2594

Temora Truck & Tractor  
1 Melaleuca St, Temora NSW 2666

West Wyalong Machinery Centre  
226 Neeld St, West Wyalong NSW 2671

### AEH TASMANIA

Gaffney Machinery - Somerset  
89-91 Bass Highway, Somerset TAS 7322

Gaffney Machinery - Longford  
4 Cairns St, Longford TAS 7301

Gaffney Machinery - Scottsdale  
15 Ten Mile Track, Scottsdale TAS 7260